

Why a Declaration of Consent?

The potential analysis is not carried out by the school itself. Therefore, your child's first name, surname, class, and school must be passed on to the cooperation partner. Your consent is required for this. This information will be treated in accordance with legal requirements and destroyed shortly after the potential analysis.

What happens next?

The potential analysis is one of the first steps in career guidance. Depending on the type of school and year level, further steps follow on the path to a career.

At www.elternpower-brandenburg.de you will find helpful information on all phases of vocational orientation in the state of Brandenburg.

What is my task?

As parents, you are one of the most important partners for your child when it comes to career guidance. Therefore, seek a conversation on this topic. Ask about their experiences and talk about the next steps. For example:

What are your (three) greatest strengths?

Which task did you enjoy the most?

What would you like to try out?

What information are you still missing?

The planet-beruf.de portal also offers helpful suggestions for parents:

<https://planet-beruf.de/eltern-und-erziehungsberechtigte>

Contact person

The first point of contact for all questions regarding career orientation and the potential analysis is your child's school.

School stamp

Helpful links



The Federal Employment Agency also offers tips for parents who are helping their child choose a career or course of study.

www.arbeitsagentur.de/bildung/schule/tipps-fuer-eltern



Further information on career orientation in the state of Brandenburg can be found on the homepage of the MBJS

mbjs.brandenburg.de/bildung/uebergang-schule-beruf/berufliche-orientierung.html

The Potenzialanalyse Brandenburg project office is responsible for the coordination and implementation of the potential analysis.

kobra.net

Beratung.Bildung.Brandenburg

Project Office
Potential Analysis
Brandenburg
kobra.net GmbH
www.kobranet.de



Last updated: 06.02.2024

Potential analysis

Information for parents



GEFÖRDERT VOM

Bundesministerium
für Bildung
und Forschung



Ministerium für Bildung,
Jugend und Sport

“What would you like to be when you grow up?”

This is a question that all parents probably ask their children. To enable your child to answer this question by the end of their schooling, career orientation begins intensively starting from the 7th grade.

One of the first steps is the potential analysis.

Why a potential analysis?

The potential analysis allows your child to get to know their own strengths and interests better. It gives them a sense of achievement and encourages them to think about their own future.

It is not about recognizing and improving weaknesses. At the end of the potential analysis, no career recommendation or suitability for a profession is made.

Rather, your child should be encouraged to explore their interests. They should be able to decide for themselves which career direction they would like to take, for example to select a suitable internship.



What happens during the potential analysis?

- Various tasks are worked on in small groups or alone.
- Competencies are observed and assessed.
- This means observing how the young people approach the tasks, what ideas they contribute and how they work in a team.
- This is not about academic knowledge.



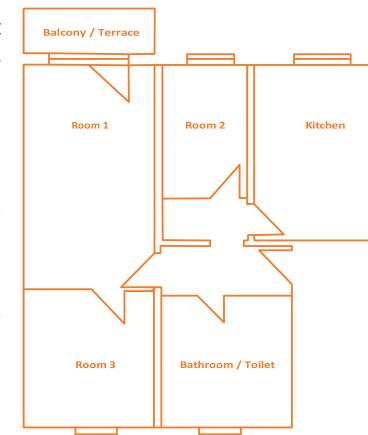
Approximately two weeks later, a thirty-minute discussion will take place to evaluate the results. You as parents can participate.

The conversation will focus on your child's experiences and the strengths observed. Additionally, your child will receive suggestions on how they can further their career orientation.

The results will be documented in a strengths profile. This profile belongs to your child and should be kept in a career choice passport. It can, for example, be used for applications.

Example of an Exercise – The Shared Apartment

As a shared living community, the youths are supposed to set up a common apartment. They need to discuss, for example, how the rooms should be divided and used. The furnishings should be calculated, and the rent should be divided. For this, the youths must keep the goal in view and make suggestions (problem-solving skills), argue factually (communication skills), and allow other opinions (conflict resolution skills).



What do I need to consider?

- The potential analysis is conducted by a trained team from a cooperation partner, usually outside of the school.
- It lasts about six hours, including breaks.
- The youths travel to the location of implementation accompanied.

This means that the school day may last longer than usual. The exact times will be provided by the school.

